

# **FIXED PROSTHETICS**

## **The Most Conservative Bridge To Somewhere**

**Healthy Teeth For A Lifetime**

**2<sup>nd</sup> Installment:**

### **ADVANTAGES OF MARYLAND BRIDGES**

- **Excellent enamel/metal bonds.**
- **No gum/bone invasion vs. implants.**
- **2-3 week turn around start to finish.**
- **Short seating time vs. implants.**
- **Short prep/impression time for fearful patients, diabetics, heart patients, elderly, mentally/emotionally challenged patients, handicapped patients.**
- **Esthetics not compromised in majority of cases.**
- **Gingiva not impinged, altered nor cut; no changes in probe depth.**
- **No cord packing**
- **Remaining tooth easily cleaned and maintained.**
- **Remaining tooth often can be bleached as needed.**
- **Remaining tooth often can be esthetically bonded as needed.**
- **Failures can be re-etched and re-bonded within 1 - 2 hours.**
- **Multiple pontic choices (ridge lap, etc.)**
- **Up to six replacements on one bridge is possible, ie. #5 to #12, #21 to #28.**
- **Stabilization of periodontally loose teeth possible.**
- **Combinations of one crown/pontic/wings are possible.**
- **Existing crown abutment rest/wings possible.**
- **Cantilever 2 units possible in select areas.**
- **Quickest of all methods to prepare and impress for efficiency.**
- **Provides for longevity of existing abutment teeth.**
- **Non-removable**
- **Non-losable from daily in and out.**
- **Porcelain or composite pontics.**
- **Non-precious metals are harder than precious metals but are flexible and don't break easily.**
- **When root tips too close for implant placement.**
- **Temporary interim restoration between ortho and implant during osseointegration.**
- **Patient terminally ill and can't keep up with removable and not candidate for implants.**

### **DOLLARS AND SENSE:**

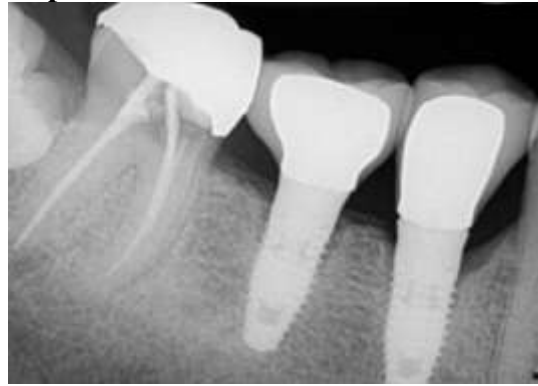
- **Roughly 2/3 of a traditional bridge**
- **Less than a traditional partial denture**
- **½ or less than an implant**
- **Two appointments versus 3 to 5 for implants**
- **2-3 weeks apart appointments**
- **Non-invasive**
- **Requires no anesthesia**
- **Reduces the fear of dental care**
- **Increases access to dental care**

# Arguments for Maryland Bridges vs. Other Tooth Replacements - From Most Affordable to Most Expensive

- Spider Partial



- Implants



- Hawley Appliance / Stayplate / Flipper



- Cast Frame Partial/ All Metal/ Metal with Acrylic



- Traditional Bridges

